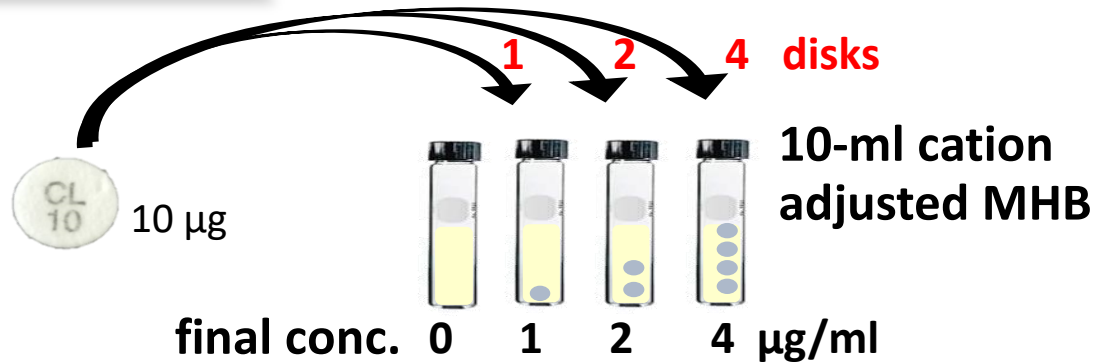


# CBDE: Test procedure

## Step 1. CBDE



Room temp, 30 min  
( $< 60$  min)



50 µl in each tube

Gently vortex

$35 \pm 2^\circ\text{C}$ , 16-20 h

**MIC**

## Step 2. Inoculum



McFarland 0.5

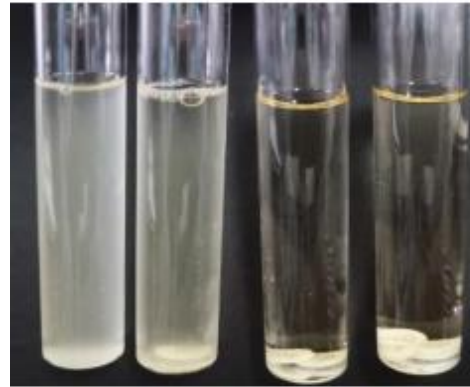
### Quality control:

- *E. coli* NCTC 13846 (*mcr-1*) (MICs, 2 to 8 µg/ml)
- *P. aeruginosa* ATCC 27853 (MICs, 0.5 to 4 µg/ml)

# CBDE: Test interpretation

MIC

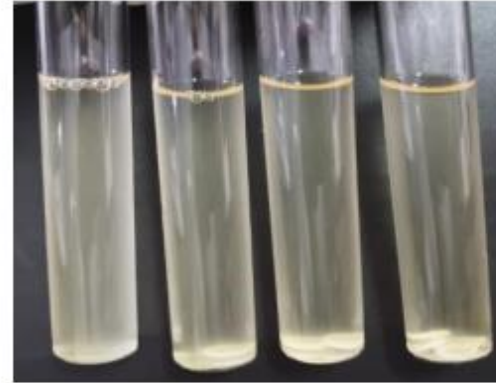
2  $\mu\text{g/ml}$



Final conc. ( $\mu\text{g/ml}$ )  
0 1 2 4

MIC

> 4  $\mu\text{g/ml}$



0 1 2 4

MIC ( $\mu\text{g/ml}$ )	Interpretive
$\leq 2$	Intermediate
$\geq 4$	Resistant